

Group Visit Guide



Mayborn
MUSEUM

BU | Baylor University



THANK YOU!

Group Leader,

Thank you for booking a trip to visit Baylor University's Mayborn Museum Complex! Our mission at the Mayborn is to engage our community and inspire life-long learning through our rich collections, vibrant programs, and hands-on experiences. We aspire to serve our community with distinction by providing greater creative opportunities for all to learn and grow.

This year we are excited about several new engaging opportunities as well as interesting collaborations with community partners. To continue to hear about these new endeavors, please be sure to sign up for our newsletter at www.maybornmuseum.com and follow us on Facebook.

We hope that you have a memorable museum visit and get to experience the joy of wonder as your group travels through a vast, diverse collection.

In the pages that follow, you will find some helpful information to make your visit a success.

We hope you enjoy your adventure!

Sincerely,

Lesla Bush

Associate Director
Baylor University
Mayborn Museum Complex



Table of Contents

Natural and Cultural History Exhibits	4
Jeanes Discovery Center Exhibits	8
Historic Village Exhibits	13
Planning Your Visit	17
Planning Form	19
TEKS	22
Museum Maps	23





Natural and Cultural History Exhibits

Cabinets of Curiosity

This room serves two purposes. The first is a tribute to John K. Strecker and the legacy he left to the Baylor University Museum which flourished during the thirty years he spent as curator. The second purpose of this room is to demonstrate the evolution of museums through history. *Be sure to open the drawers in the room!*

Spark Questions:

What do you notice about the room?

Look around the room. What are some ways museums have changed over time?



Crossroads of Central Texas

This exhibit begins the journey of understanding Central Texas' past. Included in this exhibit is a short film explaining the Central Texas region.

Spark Questions:

How do you think the Central Texas region has changed over time?

How do you think it will look in the future?





Cretaceous Room

This room is named for the Cretaceous period which occurred 144 – 65 million years ago. During this time period, most of Texas was covered with a shallow sea. This same sea is what eventually receded to form the Gulf of Mexico. In the warm waters that covered this area, marine reptiles like the pliosaur and plesiosaur thrived. On land, dinosaurs left footprints, like those found in Glenrose, in the limy mud.

Spark Questions:

What are some animals that we see today that resemble the pliosaur?

Imagine you traveled through time to the Cretaceous Period in Central Texas. What do you think you would see?



Hall of Natural History

The focal point in the Hall of Natural History is *protastega gigas*, a giant sea turtle. Around the edges of the room you will find dioramas of the Blackland Prairie, the White Rock Escarpment, and forest insects.

Spark Questions:

Notice the skeleton of *Protastega gigas*. How is this turtle similar to turtles we see today? Different?

Look at one of the dioramas and determine the food chain of the habitat.





Mammoth

This exhibit is a replica of a portion of the Waco Mammoth National Monument. It depicts the location where 24 Columbian Mammoths died from several different floods at different times.

Spark Questions:

Scientists say that Columbian Mammoths lived in groups called herds. Why do you think they lived and traveled in this way?

Examine the Mammoth bones under the plexiglass floor and try to identify as many as you can.



Cave

This is a replica of a limestone karst cave, which is the most common found in Texas. It is divided into three different zones: entrance, twilight, and dark. Each of these zones has different characteristics and organisms that call them home.

Spark Questions:

Cave explorers or spelunkers are very careful not to touch the cave formations. Why do you think that is important?

Compare/Contrast the different parts of the cave.

Forest

The forest is an example of two types of forests that could be seen in Texas in the late 1800's, the Central Texas Post Oak Forest and the East Texas Piney woods. Each of these forests shows the flora and fauna that existed in Texas over 150 years ago.

Spark Questions:

What differences do you notice between the Post Oak Forest the Piney Woods?

This is an example of a forests in Texas in the late 1800's. Why do you think we no longer see some of these animals today?



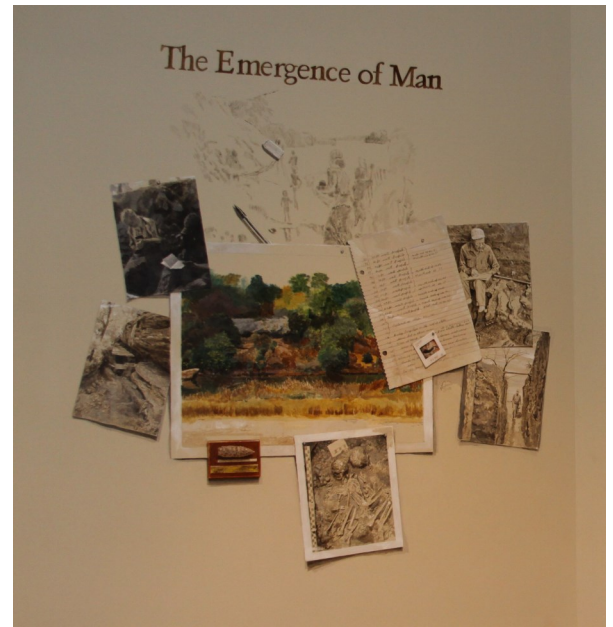
Emergence of Man

This room explains the emergence of man in central Texas beginning approximately 10,000 years ago, as demonstrated by the evidence found on display. A further transition in the Native American population is illustrated by the exhibit from the Stone site, a Waco Indian Village.

Spark Questions:

Scientists say that rock shelters faced east or south? Why do you think they were built in this way?

What do you think would have happened if this rock shelter had not been discovered?



Lifeways

Texas Lifeways represents four different types of structures or houses that were found in Central Texas. Each shelter represents a different group of people that resided in Central Texas.

Spark Questions:

What do you notice about the grass house?

Compare/Contrast the grass house, tipi, pioneer log house and the Norwegian rock house.





Backyard Ecology Hall

Amazing Abilities

Let's see what animals can do! Check out the live animals and learn about how they are prepared for the natural world. Explore how animals move, build homes, and protect themselves. Test your strength with the snake squeeze and complete the two drawing prompts!

Spark Questions:

What types of animal homes can you find in this room? How are they different?

Take a look at the chameleon and habitat! What is their amazing ability?



Forms with Purpose

Step into this room and notice the appearance of these animals! The way these animals look plays an important role in their survival. Use the dial to look at the time-lapse videos and see how plants and animals change over time. Examine the specimens under the microscope and notice the complexity!

Spark Questions:

Take a look at the turtle shell and the porcupine quills! How do these features help the animals survive?

Animal skins and shells often help protect them from their environments. How do your clothes do





Powerful River

Explore the wonderful world of water! Look into the fish tanks and see different creatures that live in water. Experiment with the channels at the water table and notice how you change the current. Try and get the water-wheel working!

Spark Questions:

What are some ways you can help keep freshwater fresh?

Look at the raining cloud on the water table! How does rain affect our waterways?



Living Together

Take a look at the different habitats of the animals in this room. Learn more about how closely our lives are tied with the lives of animals. Climb into the honeycomb and experience what life is like as a bee, then stand in front of the screen and observe what happens!

Spark Questions:

Take a look at the habitat of the Gecko and Toad! How do our lives impact the lives of animals?

Bees work together to pollinate and make honey! What are ways you work in teams to accomplish goals?





Jeanes Discovery Center Exhibits



Play Waco: Pre-K and Younger

Explore our miniature Waco! Fun role-playing opportunities abound, including fishing in the Brazos River, putting on a play, and grocery shopping for your family. **Please note: This space is for visitors and groups ages 5 and under.**

Spark Questions:

What do you want to be when you grow-up? Why?

What are some different types of transportation in the room?

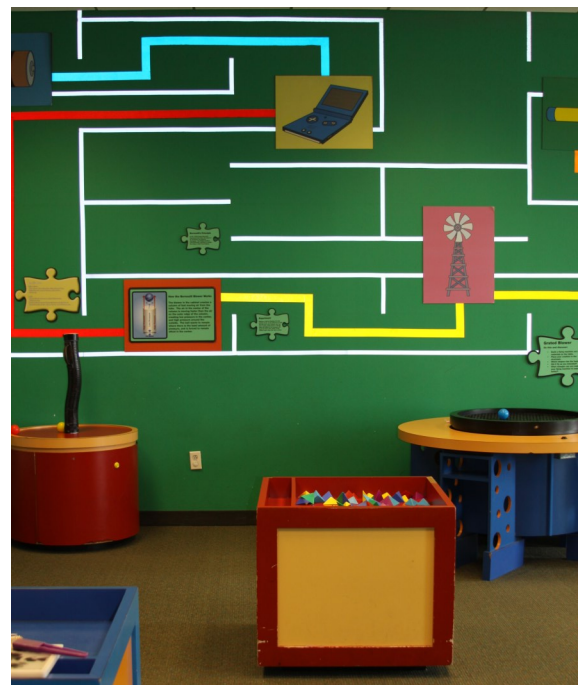
Energy

Discover the ways energy is produced and used. Balance a ball with a Bernoulli Blower, have fun with magnets, and learn about conserving energy in your home.

Spark Questions:

How are magnets used in our everyday life?

What are some ways we can conserve energy?





SpaceX and Weather



Explore what is out of this world! Learn about SpaceX, outer space, and how weather affects our lives. Check out parts from a space ship and learn about Space X!

Spark Questions:

What do you think it would be like to go to outer space? What might be challenging?

Bubbles

Everyone loves bubbles! Create bubbles of all shapes and sizes in our bubble room.

Spark Questions:

What ingredients do you need to make a bubble?

Are all bubbles round?

Can you see a rainbow in your bubble?





Design Den

Join us for hands-on exploration and tinkering in Design Den!

Design Den is open every Tuesday for Tinker Tuesdays from 10:00-12:00. Design Den may be open for pop-up programs other times throughout the week!

Groups who would like to participate in Design Den must have an adult present at all times and be willing to spend at least 20 minutes in the space.



Light and Sound

Explore the many characteristics of light and sound. Step inside a colorful kaleidoscope, build a skyline, and try your hand (or foot!) at the drums, piano, and more.

Spark Questions:

Think about all the different sounds you made in the room. What makes sound?

Play with light. How is a shadow created?





Back to the Jurassic: The Augmented Reality Experience

Step back in time to the Jurassic through augmented reality and see yourself side by side with a life-sized T-Rex, a pack of raptors, or a giant Diplodocus.

This new experience in the Harry and Anna Jeanes Discovery Center will also serve as a preview for new and exciting exhibits coming to the Mayborn.

Simple Machines

Discover the fascinating world of simple machines. Pull a lever, push a pendulum, and build an arch.

Spark Questions:

What are some simple machines you use everyday?

Try picking up the weights with the two levers. Which one is easier? Why?





Pioneer

Experience life as a pioneer. Try your hand at weaving, learn about laundry before indoor plumbing, and hitch a ride on our wagon.

Spark Questions:

Look around the room. What are some similarities and differences you notice between pioneer life and our life today?

Would you rather have lived back then or now?

Tea Room

Step into the perfect place for a tea party. Grab a tea cup and a feather boa and have some fun. Pick up tips on good manners from Emily Post.

Spark Questions:

Look at the tea set collection around the room. Do you collect anything?

If you could invite anyone to tea, who would it be? Why?





Historic Village

The Gov. Bill and Vara Daniel Historic Village is a representation of a small 1890s Texas town that depicts the life of a typical river cotton community.

Law Office

Governor Bill Daniel was a lawyer and had graduated from Baylor Law School. He and his family donated the buildings to the Mayborn Museum. This office represents a law office in the 1890's.



Spark Questions:

Why don't you see computers or a typewriter in this office?

Considering the size of the Village, do you think the lawyer would have had much work?



Commissary

A commissary is a general store. It had a variety of items one could purchase. It served as a meeting place for the community to gather, gossip, and even play checkers.

Spark Questions:

How is the Commissary the same and different from the stores we shop at today?

What items in the Commissary could be traded for other goods?





School

This one room building is an example of a school of the 1890's. Typically, one teacher would be in charge of students in grades 1st through 8th.

Spark Questions:

Compare and contrast this school to your school.

Where do you think the students ate their lunch, exercised and went to the restroom?

Barn

This building is an example of a barn that would have been used to store animals and farm tools in the 1890's and a blacksmith's workshop. A blacksmith is a person who works with metal.

Spark Questions:

Notice the different sizes of stalls. Why do you think they are different?

See how many farm tools you can identify.



Smithy

This building is called a Smithy and it is the blacksmith's workshop. A blacksmith is a person who works with metal.

Spark Questions:

Why do you think the blacksmith was a very important member of the community?

What do you notice about the workspace?





Planter's House

The Planter's House is a Texas dogtrot house. It belonged to the landowners, who was very wealthy and had many employees working for them.

Spark Questions:

What do you notice about the house?

What is missing from this house?



Cook's House

The Cook lived in this house, which was owned by the Planter. They were responsible for preparing the family's meals, tending to the chickens and kitchen garden, and doing the weekly/monthly shopping at the Commissary.

Spark Questions:

Why would the kitchen be separate from the home?

Where do you think the Cook slept?



Tenant House

This Tenant House belonged to the landowner. The Tenant Farmer and their family rented this house, land, and farming equipment from the Planter.

Spark Questions:

Look at the house. How is it similar to the Planter's House and how is it different?

What kind of crops do you think the Tenant Farmer and their family grew?





Church

The Church was typically a one-room building. There was not air conditioning in the Church and would have been heated by a wood or coal burning stove.

Spark Questions:

What similarities or differences do you see in this church and the churches we see today?

What was the purpose of the bell?

Try pumping water at the well. How many pails of water would you use per day?



Carriage House

The Carriage House is a collection of vehicles used in the 1890's. You will find an original carriage, hearse, and ambulance.

Spark Questions:

How are these vehicles the same or different than the ones we use today?

Examine the vehicles. Which ones do you believe would be able to move the fastest?





Planning Your Visit

What happens when my group arrives at the museum?

1. Your bus will enter from University Parks Drive in front of the museum and drive to the left side of the museum. A Mayborn staff member will greet your group leader.
2. The main group leader will check in and pay at the front ticketing counter. (Parents will pay at the front ticketing counter if they did not pay the school prior to the visit.)
3. Once your main group leader returns, students will exit the bus and gather in groups of 10 with their adult group leader.
4. Groups will enter the museum at the **FRONT** entrance through the glass doors.
5. Buses will park in our designated bus parking area or the Ferrell Center.

Where do parents park?

Parking for parents is available in the Mayborn parking lot in front of the Mayborn Museum.

How many group leaders does my group need and what are their responsibilities?

One group leader per 10 children.

Groups are required to have one adult group leader (18 years and up) per 10 children. We've found the smaller student to adult group leader ratio makes for a more enjoyable visit for all.

Adult group leaders must stay with your students throughout your visit. Count them periodically. Take bathroom breaks as needed. It's your responsibility to maintain good behavior and safety of the children in your group. If a student is lost or injured, look for a staff member to call security.

Adult group leaders should **GET INVOLVED!!!** As you explore exhibits and interact with educators and volunteers, encourage the students in your group to think about what they're seeing and doing. Resist the temptation to supply students with answers!

While exploring the exhibits, try asking your group some open-ended questions:

- What do you think about that exhibit?**
- Have you seen something like this before?**
- How do you think it works?**
- What do you think is happening here?**
- What does this remind you of?**
- What does this make you curious about?**
- What did you discover?**
- What do you see? (hear, feel, smell, etc.)**

What will my group do at the museum?

Your group can explore and learn at your own pace with a **self-guided** experience. You are responsible for planning your visit. Prioritize your exhibit visits by matching your units of study. Use the next page to help plan your visit.

During your visit, you may interact with our floor staff, the Spark Team. Spark Team is available to answer questions and help bring our exhibits to life with fun activities and experiences.

Where can my group eat lunch?

The picnic tables are located under the pavilion on the left side of the museum and are available free of charge. In case of inclement weather or extreme temperatures, the group leader will need to arrange for lunch offsite. The following places can potentially accommodate groups for lunch: Bledsoe Miller Recreation Center (254-750-8684), Ferrell Center (254-710-1915) or Waco Parks and Recreation (254-750-8080).

The museum does NOT store lunches and coats. These items must be left on the bus.

Can my group purchase souvenirs?

The Museum Store offers educational books, games, toys and gifts. Students who bring money can enter the store with a chaperone to purchase items.

No time to shop? Order memory bags for your students prior to your visit. Attach the form to your confirmation letter.

Where does my group exit the museum?

When it's time for your group to depart, you may exit through the front doors where you entered or the side doors by the train display closest to the buses.





Our Day at Baylor University's Mayborn Museum

Schedule

Date: _____ Arrival Time: _____

Lunch Time: _____ Lunch Meeting Place: _____

Departure Time: _____ Departure Meeting Place: _____

Teacher's Top Priority

My Group of Students

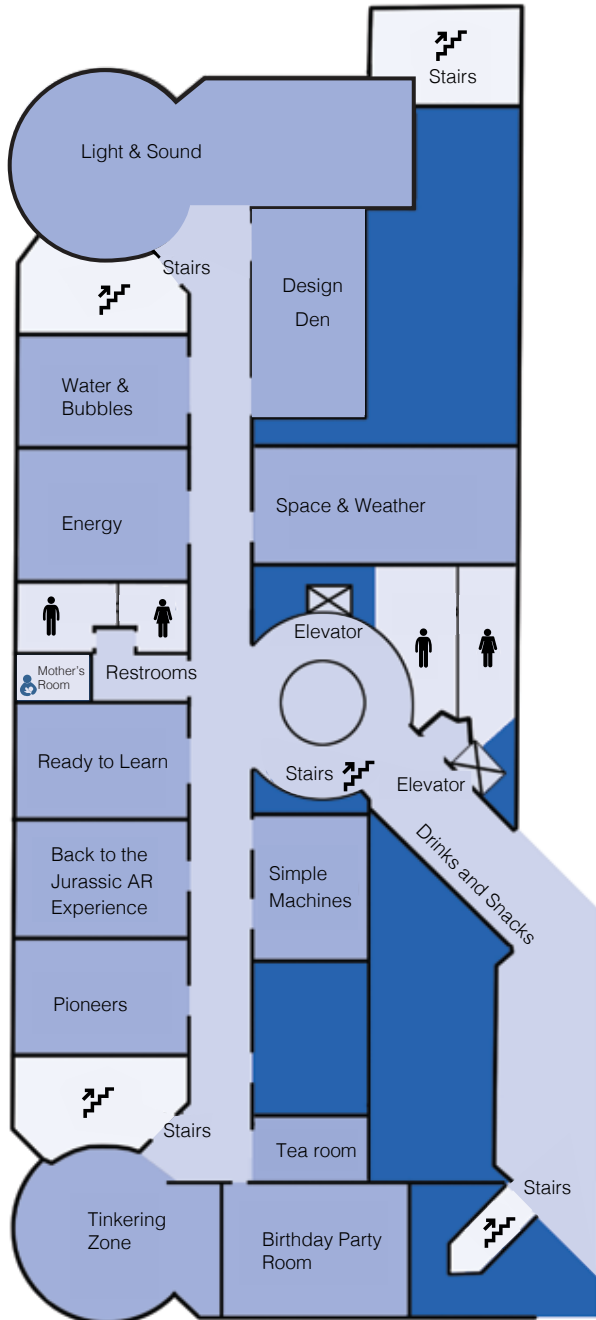
1. _____
2. _____
3. _____
4. _____
5. _____
6. _____
7. _____
8. _____
9. _____
10. _____

Teacher's Cell Phone #: _____

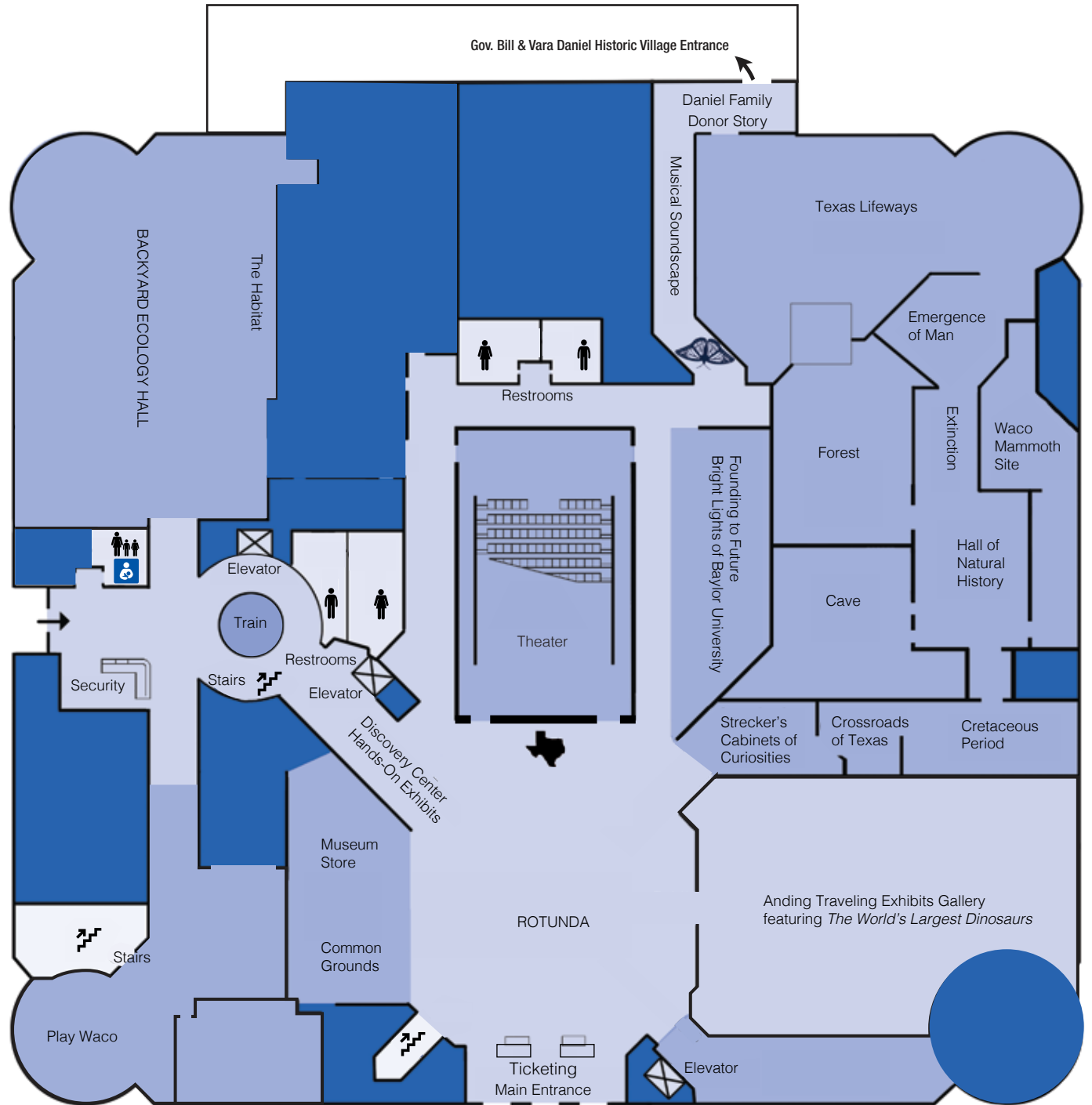
**Teachers will need to notify group leaders if they plan to allow their class to visit the museum store.*

Mayborn Museum K-8 Exhibit TEKS

Exhibit	Natural Science & History Wing (Science TEKS)	Natural Science & History Wing (Social Studies TEKS)	Village (Social Studies TEKS)	Habitat/ Green Hall (Science TEKS)	Yellow Hall (Science TEKS)	Red Hall (Science TEKS) ----- Pioneer Rm (Social Studies)
Grade						
K	2A, E: 3C; 7A;9A, B; 10 A, B	4A.B;5A.B.C;11 A. B, C; 12A.B.C; 14A.B	4A.B;5A.B.C; 10; 11A;B;12C;14B	9A,B 10A,B,C,D	4B;6A,B;8C;	3C;4A,B;6D ----- 4B;5A;B
1	2A, E; 3C; 7A;9A;10A	5A, B;6A, B; 14A	5A.B;6A,B;7A,B; 15A,B	9A,B,C 10A,B,C,D	2A;2C;6A,B;8B	4A;6B,C; ----- 5A,B;6A,B
2	2A; 3C; 7A; 9A; 10A	5A;16A. B	5A;6A,B;13A,B	9A.B.C 10A,B.C	2A;5A,D;6,B; 8C	4A;5C,D;6C ----- 5A;7C
3	3C;9A;10A	2A;3A. B;	2A,B; 3A,B, C;	9A,B 10A,B	3C;4;5A;6A, C;	4;6B; ----- 2A;2B
4	3C;10A	1A.B.C.D;2A;4B; 4D; 7A.B;9A.B;11B;	7A,B;8A,B;9B;11A,B;	9A,B 10A,B,C	3C;5A;6A,B,C; 8C;	4;6D ----- 8A,B;
5	3C;7A;9A;10A	1A;4F;8A;	6B;7A;8A;12A,B;	9A,B 10A,B	3C;B;6A,B,C,D; 8D	4;6D ----- 8A
6	10B;10D;	2A.B;	5C;	12F	11C;	4A;8A
7	11B	6B;10A.B;	9A; 19A,B	11B;12A	9B	4A
8	9B	11A	11A;28A	11B	6C	4A

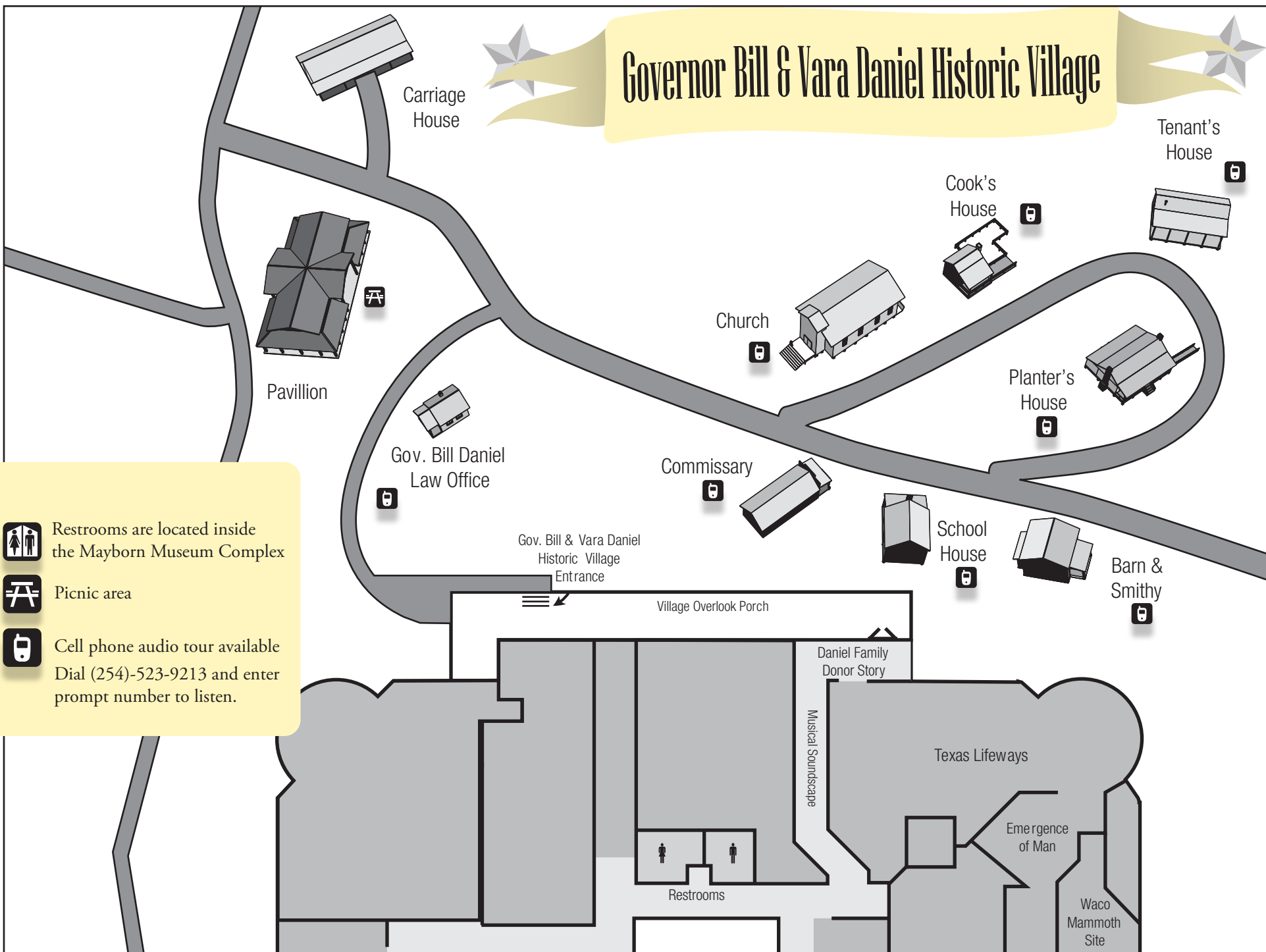


Second Floor



First Floor

Governor Bill & Vara Daniel Historic Village



Carriage House

Tenant's House

Cook's House

Church

Pavillion

Planter's House

Gov. Bill Daniel Law Office

Commissary

School House

Barn & Smithy

Gov. Bill & Vara Daniel Historic Village Entrance

Village Overlook Porch

Daniel Family Donor Story

Texas Lifeways

Emergence of Man

Waco Mammoth Site

Restrooms



Restrooms are located inside the Mayborn Museum Complex



Picnic area



Cell phone audio tour available
Dial (254)-523-9213 and enter prompt number to listen.